

# 2015 Forest River Rv Surveyor Cadet SC 191T

\$15,911



## Item

Item URL: <https://www.rvpostings.com/321385> Item reference number #321385

## Dealer

Bish's RV - Meridian  
Phone: 8552594151  
Email: [import237742@rvpostings.com](mailto:import237742@rvpostings.com)

## Quick info

0 mi

## Details

Item type: For sale  
Posted on : 10/31/2022

## Description

Description 2015 Forest River RV Surveyor Cadet SC 191T, The Surveyor Cadet expandable SC-191T by Forest River offers a front and side queen tent bed. As you enter the expandable, to the right there is an entertainment center. One side of the expandable has a double kitchen sink, three burner range, and refrigerator. The other side has a dinette and pantry. In the rear you will find a bathroom with a sink, corner shower, and toilet. There is a nice size wardrobe next to the bathroom. Bish s RV - Meridian, Idaho has a huge selection of Travel Trailers, Fifth Wheels, Pop Up Campers, Truck Camper s, Toy Haulers, Class A Motorhomes, Class B Camper Vans, and Class C Motorhomes. All these RVs are priced to sell. Be sure to ask about our Purchase with Confidence Guarantee to ensure you are receiving the best RV buying experience in Meridian and surrounding areas like Boise, Nampa, & Caldwell. Affordable prices on all new and used RVs only at Bish s RV of Meridian. Sleeps 6 Slideouts

## Basic information

Year: 2015  
Stock Number: P74640A  
VIN Number: 4X4TSVU1XF2473502  
Condition: Pre-Owned

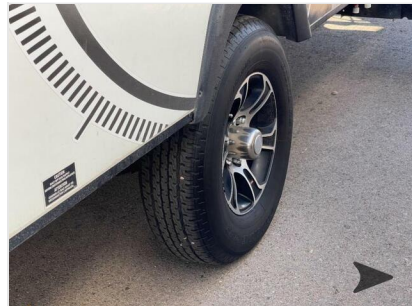
## Item address

[1300 W Overland Rd, 83642, Meridian, Idaho, United States](#)

# 2015 Forest River Rv Surveyor Cadet SC 191T

\$15,911

## Item images



# 2015 Forest River Rv Surveyor Cadet SC 191T

**\$15,911**

FRONT	ST225/75R15D	65 PSI / 448 KPA	MANUAL FOR	4	AVANT	ST225/75R15
REAR			ADDITIONAL	7	ARRIÈRE	
SPARE	ST225/75R15D	65 PSI / 448 KPA	INFORMATION	3	DE SECOURS	ST225/75R15
				0		
				2		

MANUFACTURED BY: FOREST RIVER, INC. DATE: 7/10/2014 THIS VEH U.S. FEES STANDARD MANUFACT.

VIN: 4X4TSVU1XF2473502 TRAILER TRAILER

GVWR: 2194 KG (4836 LB) OR SCT191T

Compl. Size: SV2473502

FRONT	1906 KG (4200 LB)	ST225/75R15D	15X5.5J	448PSI	80PSI	80PSI
REAR	0 KG (0 LB)					
SPARE	0 KG (0 LB)					

CE VEHICLE NORMES CAU DU PROBLEME AUTOMOBILE DATE DE SA

RECREATIONAL VEHICLE TRAILER CARGO CARRYING CAPACITY  
Dry Weight: 3428 VIN: 4X4TSVU1XF2473502  
THE WEIGHT OF CARGO SHOULD NOT EXCEED  
621 kg or 1376 lbs

CAUTION:  
A full load of water equals 151 kg or 333 lbs of cargo @ 1 kg/L (8.33 lb/gal)

**TIRE AND LOADING INFORMATION**

The combined weight of Cargo should Never Exceed... 621 kg or 1376 lbs

TIRE	SIZE	COLD TIRE PRESSURE	SEE OWNERS
FRONT	ST225/75R15D	65 PSI / 448 KPA	MANUAL FOR
REAR			ADDITIONAL
SPARE	ST225/75R15D	65 PSI / 448 KPA	INFORMATION

REAR

