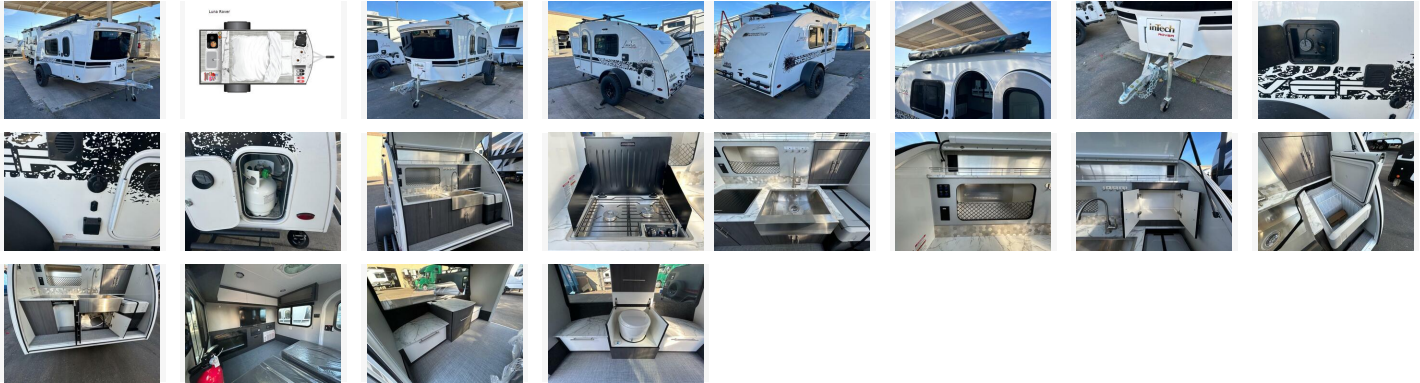


2024 Intech Rv Luna Rover

\$23,980



Item	Item URL: https://www.rvpostings.com/503332 Item reference number #503332
Dealer	Tom's Camperland Phone: 4803592438 Email: import237430@rvpostings.com
Quick info	0 mi
Details	Item type: For sale Posted on : 04/13/2024

Description	<p>2024 inTech RV Luna Rover, inTech RV Luna Rover teardrop trailer highlights: Sleeps Two 32" TV Rugged Decals MaxxAir Vent Fan Adjustable Roof Rack When your adventure is all about the outdoors, but you would rather sleep on a comfortable queen-size bed instead of an air mattress, this Luna teardrop trailer is precisely what you need! The 260-270 lbs. tongue weight and the 550-625 lbs. carrying capacity allow you to hitch up and head out without a worry. With the full kitchen that has been included in the hatch of this model, you have the ability to prepare and enjoy a delicious meal outdoors that isn't hot dogs or s'mores, and the kitchen storage allows you to keep all of your favorite snacks and spices handy while you cook. Every morning you will love waking up to the beautiful and picturesque views of the lake or mountains coming through the large tempered glass panoramic windshield, and when you find yourself camping out in the middle of summer, you will enjoy staying indoors a little bit longer because of the 8,000 BTU air conditioner that will cool you down. The optional straight awning creates a bit more outdoor living space protected from the elements! Each Luna teardrop trailer by inTech RV is constructed with an all-aluminum, all-tube, cage frame, a one piece fiberglass roof, plus bubble foil R7 insulation to provide a durable unit made to last. You will always stay cool with the 8,000 BTU A/C and the MaxxAir vent fan. Each model includes an outside kitchen with a 40qt. 12V cooler to store your cold food, a stainless steel cooktop, plus plenty of storage space for all your necessities. Inside, you'll enjoy the Infinity Woven flooring, two tinted windows with shades and screens, a Bluetooth stereo with four speakers and a 32" TV, plus USB ports and outlets to keep your phone and tablet charged. You'll appreciate the 1,775 lbs. to 1,850 lbs. dry weights for easy towing and the Rover Package that includes an aluminum tube rear bumper, rugged decals, integrated side steps, and an adjustable roof rack for luggage or kayaks!</p>
-------------	--

2024 Intech Rv Luna Rover

\$23,980

Basic information

Year: 2024
Stock Number: MSA016542
VIN Number: 7H0TL131XRN016542
Condition: New
Length: 15
GVW: 2400
Sleeps: 2

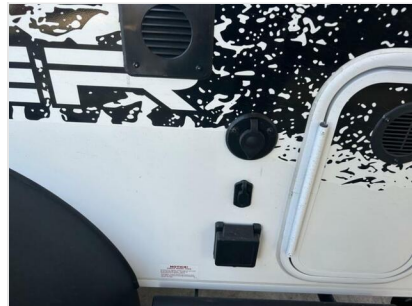
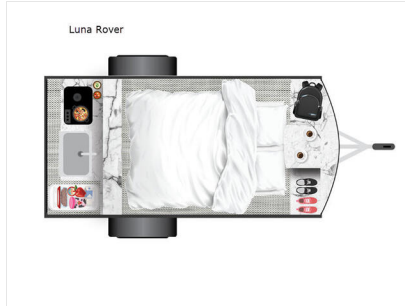
Item address

[, Mesa, Arizona, United States](#)

2024 Intech Rv Luna Rover

\$23,980

Item images



2024 Intech Rv Luna Rover

\$23,980