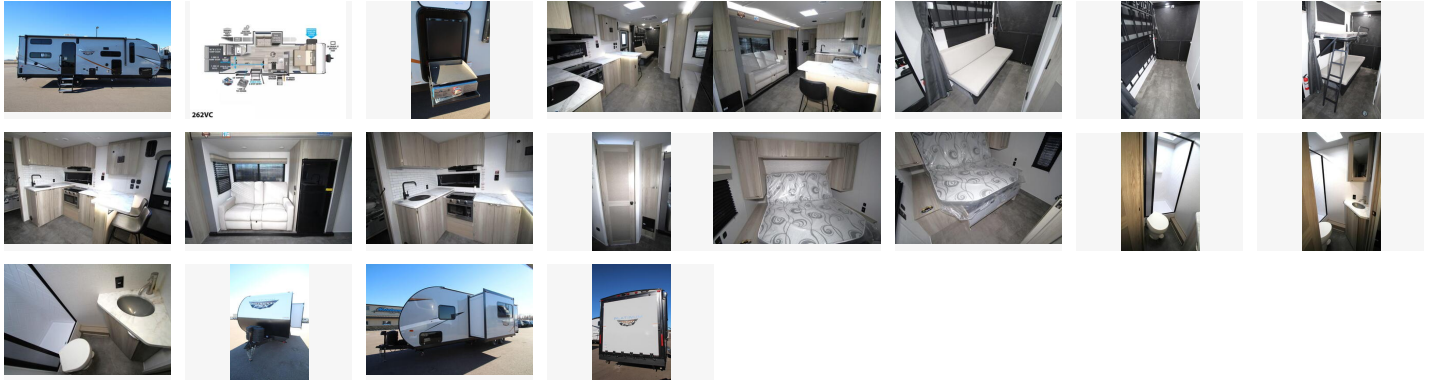


# 2024 Forest River Wildwood FSX MAX 262VC

Not priced



Item

 Item URL: <https://www.rvpostings.com/355794> Item reference number  
#355794

Dealer

 Noteboom RV  
Phone: 605-743-4002  
Email: [info16@rvpostings.com](mailto:info16@rvpostings.com)

Quick info

0 mi

Details

 Item type: For sale  
Posted on : 01/12/2022

# 2024 Forest River Wildwood FSX MAX 262VC

**Not priced**

## Description

COMPLIMENTARY PACKAGE: POWER CORD, BATTERY BOX, INTERSTATE BATTERY, FILLED LP TANKS, TECH SUPPORT WALK THRU - FOR NEW UNITS ONLY 2024 Forest River Wildwood FSX MAX 262VC Fully featured, light weight, and easy to tow, Wildwood FSX offers convenience in a tiny package. Perfect for first time and seasoned campers alike, a modern residential living space is easy to call your home away from home. Features may include: Exterior MAX Extended Power Package: Roof Mounted 200W Solar Panel, 30 Amp Controller, and Single Battery Oversized Entrance Doors - 30" Wide Instead of 26" - 15% Larger Than Normal Detachable Power Cord Oversized 54/40/40 F/G/B Holding Tanks for Extended Camping Dual Group 27 Battery Trays for Extended Camping Power Battery Disconnect to Turn Entire Unit Off When Done Camping Extra Large Baggage Doors for More Gear Storage Backup Camera Ready - Just Plug and Play Largest in Class Opening Panoramic Windows Exterior Speakers w/ Blue LED Lights 7-Way Plug and Chain Holder Dedicated Cable TV Hookup on Exterior of Coach 6 Gal. Gas DSI Water Heater Omni Directional Digital TV Antenna Side Mounted Solar Inlet on Camp Side MAX 84" Interior Height for Toys of All Sizes - Especially Newer Golf Carts and Side by Sides MAX Width (Varies by Model) - Specifically Designed to Get You Every Inch of Space for Larger Toys MAX Ramp Loading Convenience: Easy open patio kit for full ramp usage when loading toys E-Z Ramp Approach Angle (Average 16°) 1,500LB Tie Downs for Securing Gear, Strategically Placed Throughout Each Floorplan 50% Thicker Floor Structure That Normal Travel Trailers to Accept Heavier Loads 2x Chassis Support Throughout Garage Area for Gear Carpet Free and Floor Ductwork Free in All Garage and Gear Areas for Easy Cleanup Upgraded Full Blackout Window Coverings to Keep Prying Eyes at Bay When Storing Precious Cargo Removable Entrance Step to Get Every Last Inch Of Storage Interior 4 - 6 Tablet Compatible USB Ports in Bedroom, Bunks, Living Areas MAX 15,000 BTU Air Conditioner for Cool Comfort - 11% Larger Than Normal - Replaces Standard 13,500 BTU Air Conditioner Fully Independent Air Conditioning Ductwork for Focused Cooling When Needed Large Shower Pans for Adults (No Bathtubs) 50 Amp Service w/ Auto Detect Converter (Works with Multiple Battery Types) 3 - TV Mounting Areas (Varies by Model) Water Heater Bypass 20K BTU Furnace Ducted Through Walls and Cabinets, No Floor Ducting MAX Kitchen Storage - Nearly 50% More Cabinetry Than Others Thanks to Space Saving Appliances and Clever Designs 3-in-1 Cooker w/ Convection Oven, Microwave, 3 Burner Gas Cooktop Dual Swinging 12V Refrigerator for Easy Access on Either Side ((Varies by Model and Date of Build) Residential High Rise Kitchen Faucet and Deep Stainless Steel Kitchen Sink with Sink Cover/Cutting Board Slim Range Vent Hood over Cooktop Seamless Countertops with Waterproof Membrane for Longevity

## Basic information

**Year:** 2024  
**Stock Number:** RY101829  
**VIN Number:** 4X4TWDB28RY101829  
**Condition:** New

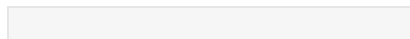
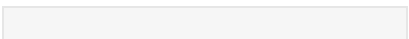
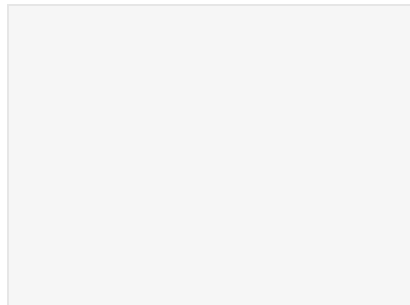
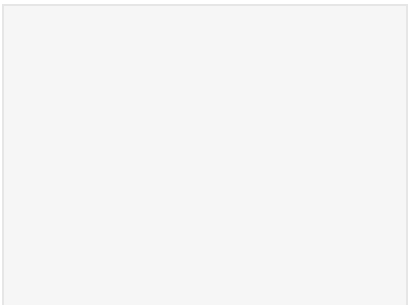
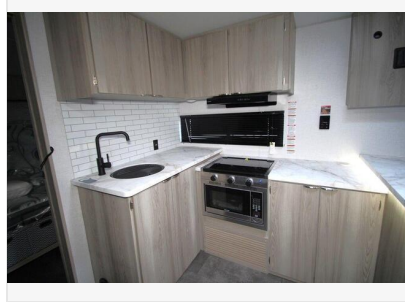
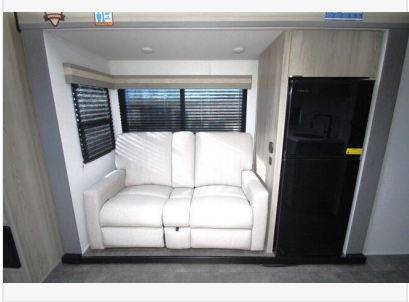
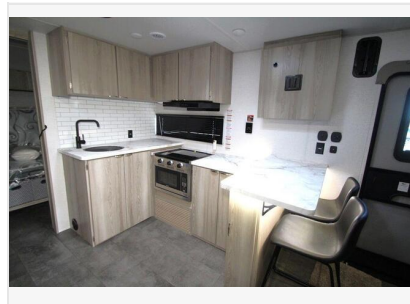
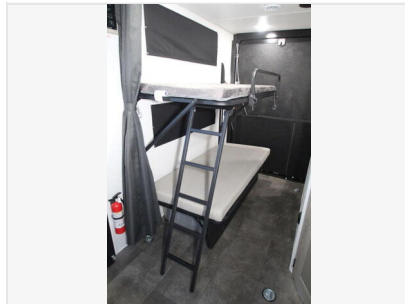
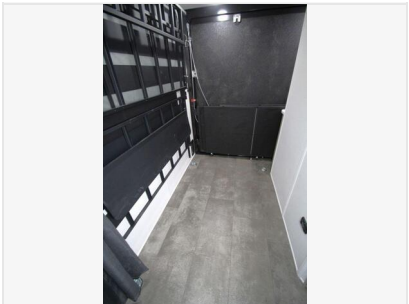
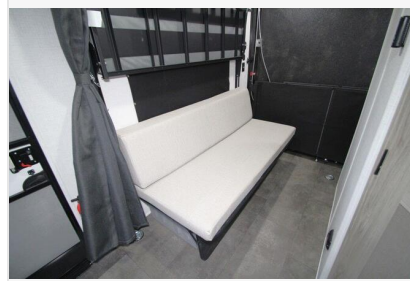
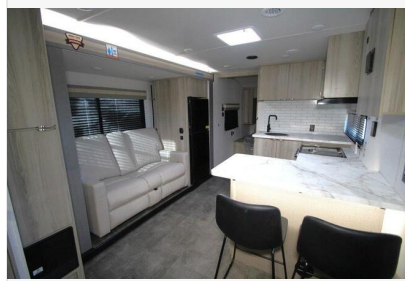
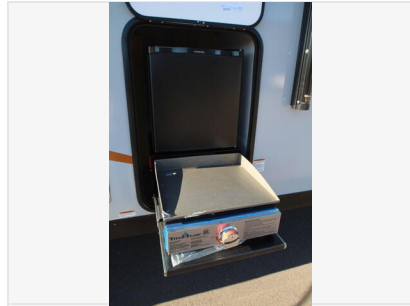
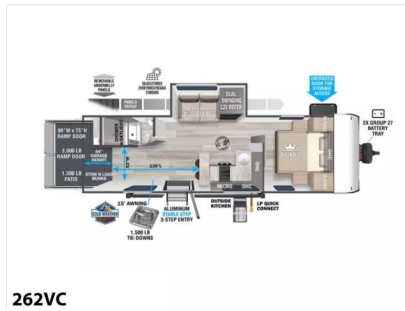
## Item address

[27316 SD Hwy. 115, 57032, Harrisburg, South Dakota, United States](#)

# 2024 Forest River Wildwood FSX MAX 262VC

Not priced

## Item images



## 2024 Forest River Wildwood FSX MAX 262VC

**Not priced**