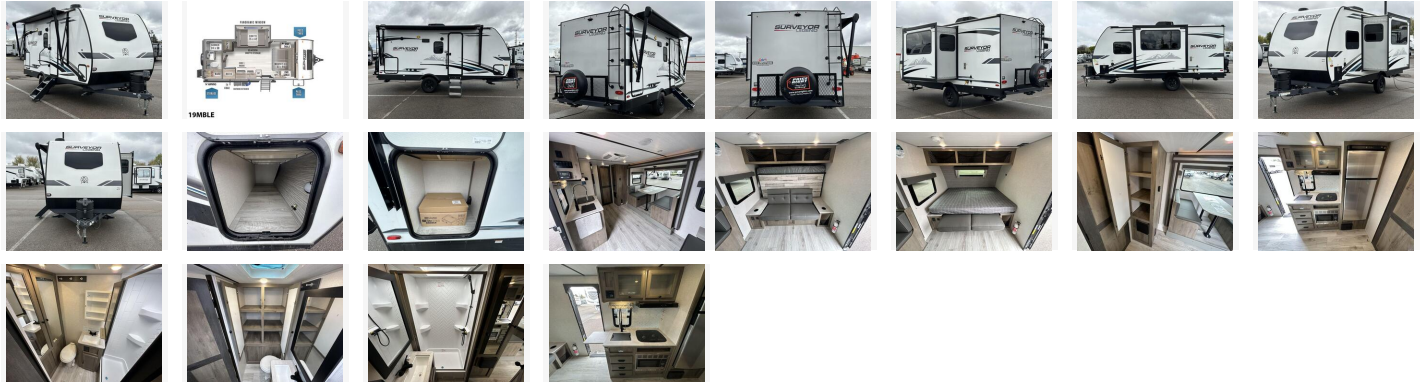


2022 Forest River Surveyor Sub - 4000 lb. 19MBLE

\$21,980



Item	Item URL: https://www.rvpostings.com/151314 Item reference number #151314
Dealer	Price Right RV Phone: 8884261125 Email: import237960@rvpostings.com
Quick info	1 mi
Details	Item type: For sale Posted on : 10/31/2022

2022 Forest River Surveyor Sub - 4000 lb. 19MBLE

\$21,980

Description

2022 Model Clearance Sale Going on Now! The 2022 Forest River Surveyor Legend 19MBLE travel trailer features a folding murphy-type bed on the front wall with a sofa underneath. We are confident that your experience at Price Right RV will be unparalleled, with our friendly and knowledgeable staff combined with competitive and transparent pricing in sales and service. Come to either of our locations: Price Right Dewitt in Mid Michigan, or Price Right Sterling Heights in the Greater Detroit area. Price Includes full dealer prep, propane, deep cycle RV battery and more! No surprise fees. Trades are always welcome! 2022 Forest River Surveyor Sub - 4000 lb. 19MBLEThe 19MBLE features a folding murphy-type bed on the front wall with a sofa underneath, plus end tables and overhead storage. There is a spot for an optional TV next to the bed on the door side. Looking toward the rear, you have a slide room on the right wall with a 75" x 42" booth dinette, EZ-Access dinette storage, and panoramic window. The kitchen is located on the left wall and contains a sink, cooktop, convection microwave, and refrigerator, with overhead cabinets. Never Stop Exploring Our Sub-4 series starts at under 4,000 lbs dry. Lightweight, compact, and designed to take you beyond the path, so you can leave the trail. Features may include: Wall Construction (R7, R9) Pinch roll laminated at 1600 PSI, 100% glue coverage - Closed Cell Block Foam Insulated, optimum comfort. Air-Pressure Sealed Tested ensures maximum efficiency. Aluminum Framing All Openings. Underbelly: Lami Plast® Insulates floor, pipes & tanks, forms a double walled layer pocket of air. Floor: 2" thick Aluminum perimeter & cross studding, R9 Closed Cell Block Foam Insulation, inside double layer plywood offset, exterior layer of plywood protected by moisture barrier Darco®. Heat Duct to underbelly & other ducts provide radiant heat. PVC Membrane - Fully Walkable Roof 16" On-Center trusses featuring 3/8" R14 Residential Blanket Insulation, finished with Best in Class PVC Roof Membrane. Best In Industry Pass-Through Storage Oversized, clean finish: Slam Latch Baggage Handle, 3/4" Stab Jack Drill Bit, Motion Sensor Light, and Aluminum Bed base! Congoleum Designer Carefree Linoleum. Solar standard Outside Kitchen 10 Cu. Ft. 12V Refrigerator Front Baggage door Cleanest front end

Basic information

Year: 2022
Stock Number: NR1310
VIN Number: 4X4TSVU12NL043696
Condition: New

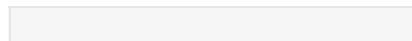
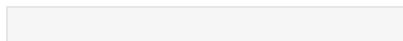
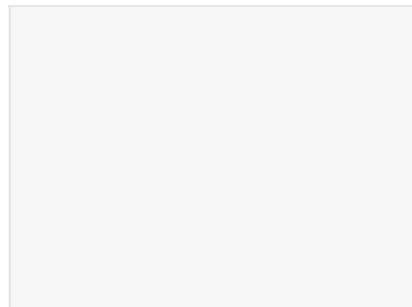
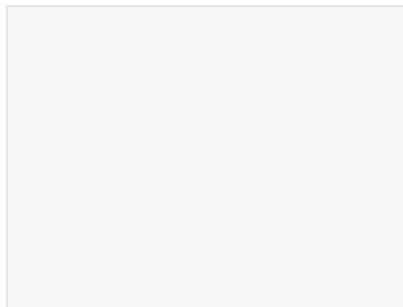
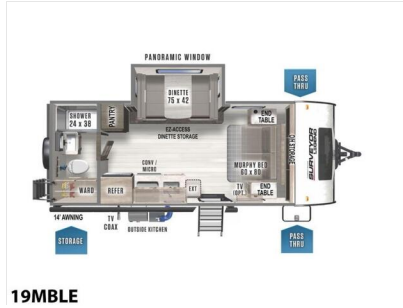
Item address

[12909 Old US Hwy 27, 48820, DeWitt, Michigan, United States](#)

2022 Forest River Surveyor Sub - 4000 lb. 19MBLE

\$21,980

Item images



2022 Forest River Surveyor Sub - 4000 lb. 19MBLE

\$21,980