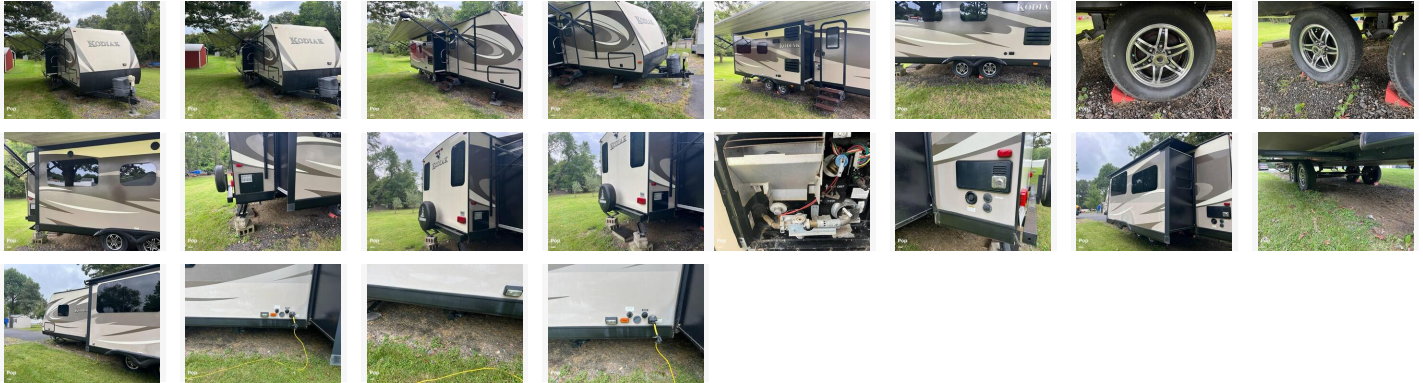


## 2015 Travel Trailer Dutchmen Kodiak

**\$22,750**

### Item

**Item URL:** <https://www.rvpostings.com/328158> **Item reference number**  
#328158

### Dealer

Pop RVs  
Phone: 8886139535  
Email: [import237978@rvpostings.com](mailto:import237978@rvpostings.com)

### Details

**Item type:** For sale  
**Posted on :** 10/31/2022

### Description

Stock #364718 - 2015 KODIAK BY DUTCHMEN 291RESL TRAVEL TRAILER SLEEPS 6 This is a GREAT Rear Living travel trailer under 7,000 lbs and can be towed by a half-ton truck with ease. Two full slides that oppose each other open the rear of the trailer to a huge living space with a big kitchen and extra sleeping spaces. The bathroom has a large shower and a porcelain toilet. The primary bedroom has an upgraded FULL QUEEN memory foam mattress that will give you the perfect night's sleep after a long day at the campground. With one AC unit in the main cabin, there is also a pre-wired location in the bedroom for a second AC! We are looking for people all over the country who share our love for boats/RVs. If you have a passion for our product and like the idea of working from home, please visit [Careers \[dot\] PopSells \[dot\] com](http://Careers.PopSells.com) to learn more. Please submit any and ALL offers - your offer may be accepted! Submit your offer today! You have questions? We have answers. Call us at (941) 200-1030 to discuss this RV. Selling your RV has never been easier. At Pop RVs, we literally sell thousands of units every year all over the country. Call (855) 273-7188 and we'll get started selling your RV today.

### Basic information

**Year:** 2015  
**Stock Number:** 364718  
**VIN Number:** rvusa-364718  
**Condition:** Pre-Owned  
**Length:** 29

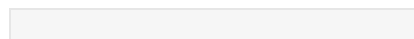
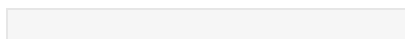
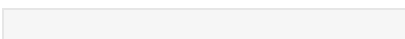
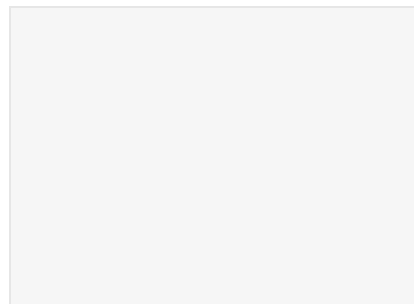
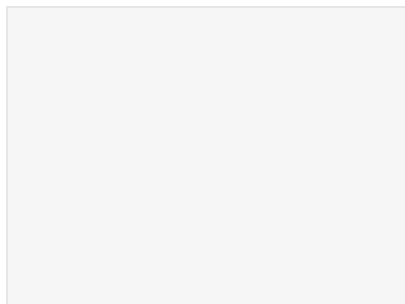
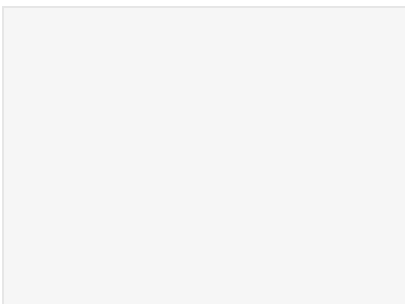
### Item address

[21144, Severn, Maryland, United States](#)

# 2015 Travel Trailer Dutchmen Kodiak

\$22,750

## Item images





## 2015 Travel Trailer Dutchmen Kodiak

**\$22,750**