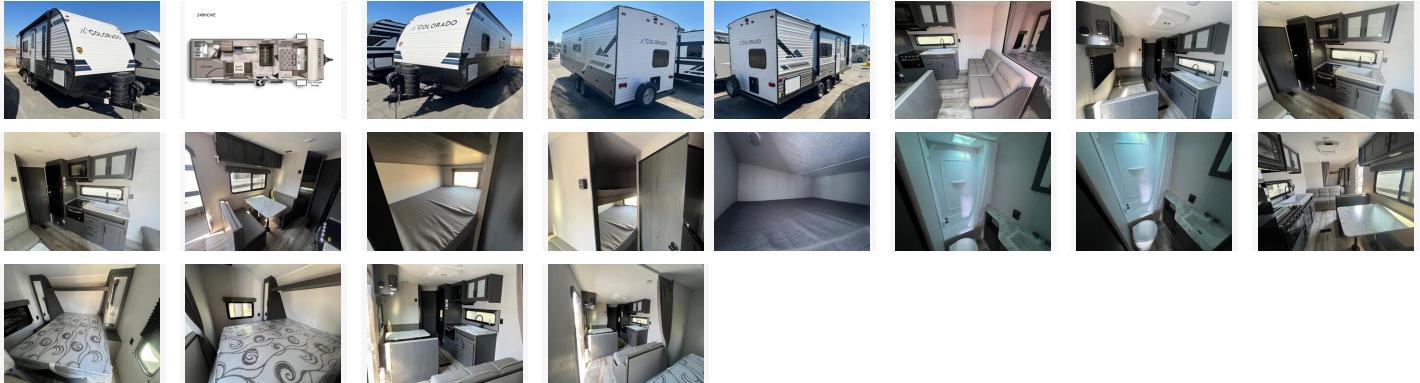


2024 Colorado 24BHCWE

\$37,260



Item

Item URL: <https://www.rvpostings.com/332471> Item reference number #332471

Dealer

RV Country Fresno
 Phone: 559-302-9630
 Email: import25@rvcountry.com

Quick info

0 mi

Details

Item type: For sale
 Posted on : 05/02/2021

Description

New 2024 Dutchmen RV Colorado 24BHCWE Dutchmen Colorado travel trailer 23BHCWE highlights: Jack Knife Sofa Semi-Private Bedroom Shower with an Exhaust Fan Microwave Oven 10 Cu. Ft. Refrigerator Load up for a fun weekend or long vacation with this trailer in tow! Whether you camp close or far away, you will have eight to nine sleeping spaces thanks to the residential queen bed in the semi-private bedroom, the double-size bunks near the rear corner bathroom, and the furniture in the middle. Everyone can take turns getting dressed in either the full bathroom, or front bedroom once the privacy curtain is closed. There is plenty of storage found throughout in the wardrobes, overhead cabinets, and along the exterior in the pass-through compartment for those longer items. And the 14' power awning with LED lights gives you an outdoor living space protected from the elements! With any Colorado travel trailer by Dutchmen, there is upgraded residential flooring for durability, blackout night shades throughout for privacy, oversized windows for great views when inside, and full-extension drawer guides throughout. Each Colorado comes standard with the Blade air flow system which is designed to reduce air turbulence and noise accelerating airflow. Other highlights include a power tongue jack, power stabilizer jacks, a high-output furnace, and solar prep. Front Bedroom|Bunkhouse

Basic information

Year: 2024
 Stock Number: 41600
 VIN Number: fresno-41600
 Condition: New
 Length: 344
 Sleeps: 8

2024 Colorado 24BHCWE

\$37,260

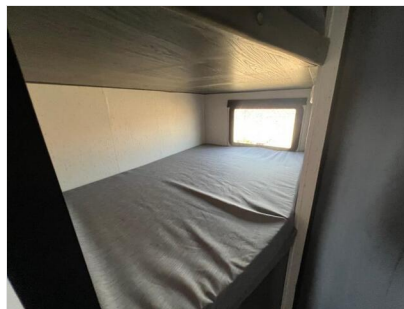
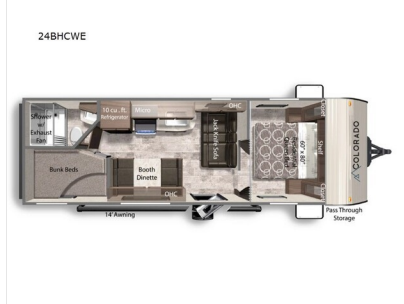
Item address

[3633 S Maple Ave, 93725, Fresno, California, United States](#)

2024 Colorado 24BHCWE

\$37,260

Item images



2024 Colorado 24BHCWE

\$37,260

