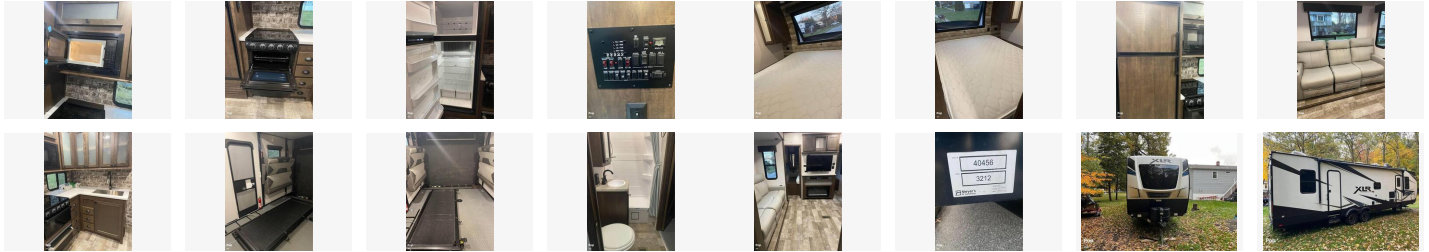


2021 Toy Hauler Forest River XLR

\$54,500

Item

Item URL: <https://www.rvpostings.com/240705> **Item reference number**
#240705

Dealer

Pop RVs
Phone: 8886139535
Email: import237978@rvpostings.com

Details

Item type: For sale
Posted on : 10/31/2022

Description

Stock #319020 - 2021 Forest River XLR Hyper light HD with 5.5 kw generator, used for 2 years and still in GREAT conditionUp for sale is this one owner 2021 Forest River Hyperlight 3212 toy hauler. This particular toy hauler has both luxury and utility abound. This toy hauler has been designed for those who seek luxury accommodations and the ability to carry along some of their outdoor recreation vehicles too. The RV has been set up with ample sleeping accommodation with two queen sized sleeping areas along with two additional sleeper sofas to accommodate up to eight. The kitchen is fully equipped to handle all preparations of meals and the RV features a full bathroom. The garage can handle a variety of toys such as quads motorcycles etc. This area also provides an additional sleeper that can be lowered down for use without the toys in that area. We are looking for people all over the country who share our love for boats/RVs. If you have a passion for our product and like the idea of working from home, please visit Careers [dot] PopSells [dot] com to learn more. Please submit any and ALL offers - your offer may be accepted! Submit your offer today! You have questions? We have answers. Call us at (941) 200-1030 to discuss this RV. Selling your RV has never been easier. At Pop RVs, we literally sell thousands of units every year all over the country. Call (855) 273-7188 and we'll get started selling your RV today.

Basic information

Year: 2021
Stock Number: 319020
VIN Number: rvusa-319020
Condition: Pre-Owned
Length: 32

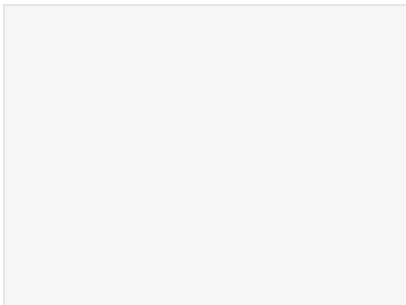
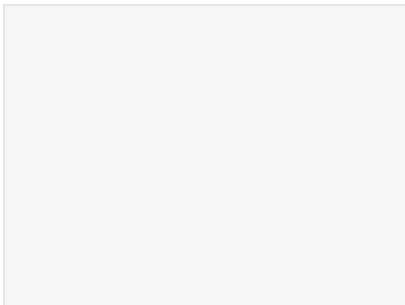
Item address

[10992, Washingtonville, New York, United States](#)

2021 Toy Hauler Forest River XLR

\$54,500

Item images



2021 Toy Hauler Forest River XLR

\$54,500