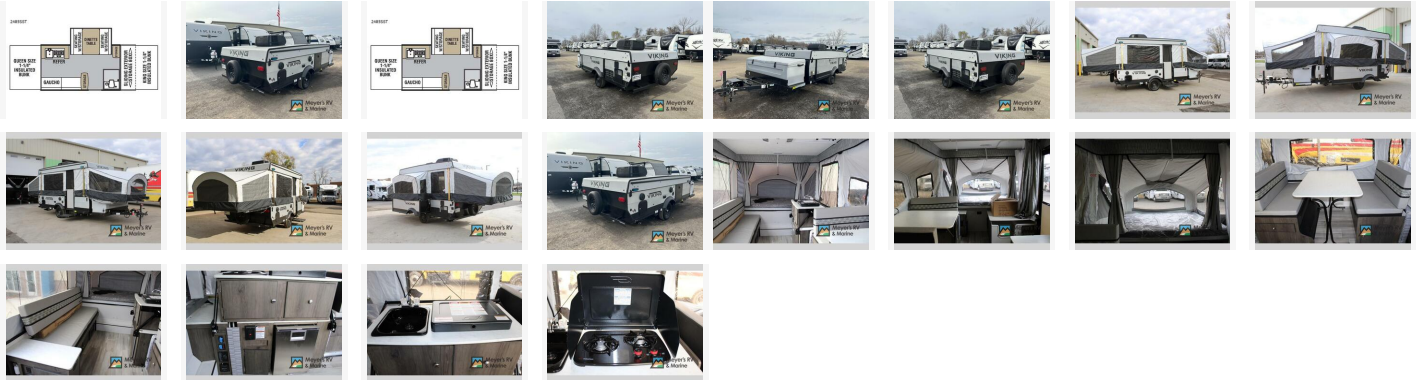


# 2022 Viking Legend 2485SST

**\$15,895**

## Item

**Item URL:** <https://www.rvpostings.com/372768> **Item reference number**  
#372768

## Dealer

Meyer's RV Superstores - Farmington  
Phone: 8773386809  
Email: [import237845@rvpostings.com](mailto:import237845@rvpostings.com)

## Quick info

0 mi

## Details

**Item type:** For sale  
**Posted on :** 10/31/2022

## 2022 Viking Legend 2485SST

**\$15,895**

### Description

2022 Viking Legend 2485SST, Viking Legend folding pop-up camper 2485SST highlights: Dinette Slide Wet Bath King Tent Bed Gaucho Sofa Exterior Sliding Storage Looking for comfort and lots of interior space in your next RV? Do you need a pop-up camper for its ability to easily tow and store once your adventures are over? This Legend should provide all that plus so much more! You will find two tent end beds, a queen in the rear and a king in the front, both with a bunk step for easy entry. The booth dinette slide provides a spacious interior, plus includes storage under the seats. When you want to dine inside, you can utilize the dinette or even the gaucho, and both of these furnishings provide more sleeping space for a bigger crew. The chef will have an E-Z swing galley that raises up for maximum comfort when cooking on the two-burner range and washing dishes at the single bowl sink. There are several options to enhance this already loaded camper such as adding a 13,500 BTU air conditioner, a 40 or 80 watt Zamp portable solar panel for off-grid camping, a "Jack It" bike rack, and/or a screen room with privacy flap, plus more! With the Viking Legend folding pop-up camper, the interior offers an E-Z one-hand swing level galley allowing you to easily make meals and wash your hands inside, a bath package with a modular cassette potti/shower combo, an AM/FM/Bluetooth stereo with App control plus interior/exterior speakers, and a charging center for your cellphone and such. The exclusive Glide-N-Lock cable supported bed system eliminates the need for support poles under the beds and the E-Z swing stepper door with hydraulic assist, operates in seconds and provides the largest, most stable step platform in the industry. The exterior offers a super sliding storage box that enables full, easy accessibility even when the camper is setup, and you will find confidence in the e-coated tubular steel frame, automotive grade metal, the four-layer laminated seamless roof, and VRX sectionalized tent. 13.5K BTU ROOF AIR CONDITIONER; DEALER DISCOUNT; EXTERIOR BBQ GRILL W/ HOSE; MARKET SURCHARGE; VIKING EPIC AND LEGENDS ESSENTIALS

### Basic information

**Year:** 2022  
**Stock Number:** 33162  
**VIN Number:** 5ZT1VKGC6N5020750  
**Condition:** New  
**Length:** 23  
**GVW:** 3296  
**Sleeps:** 6  
**Slideouts:** 1

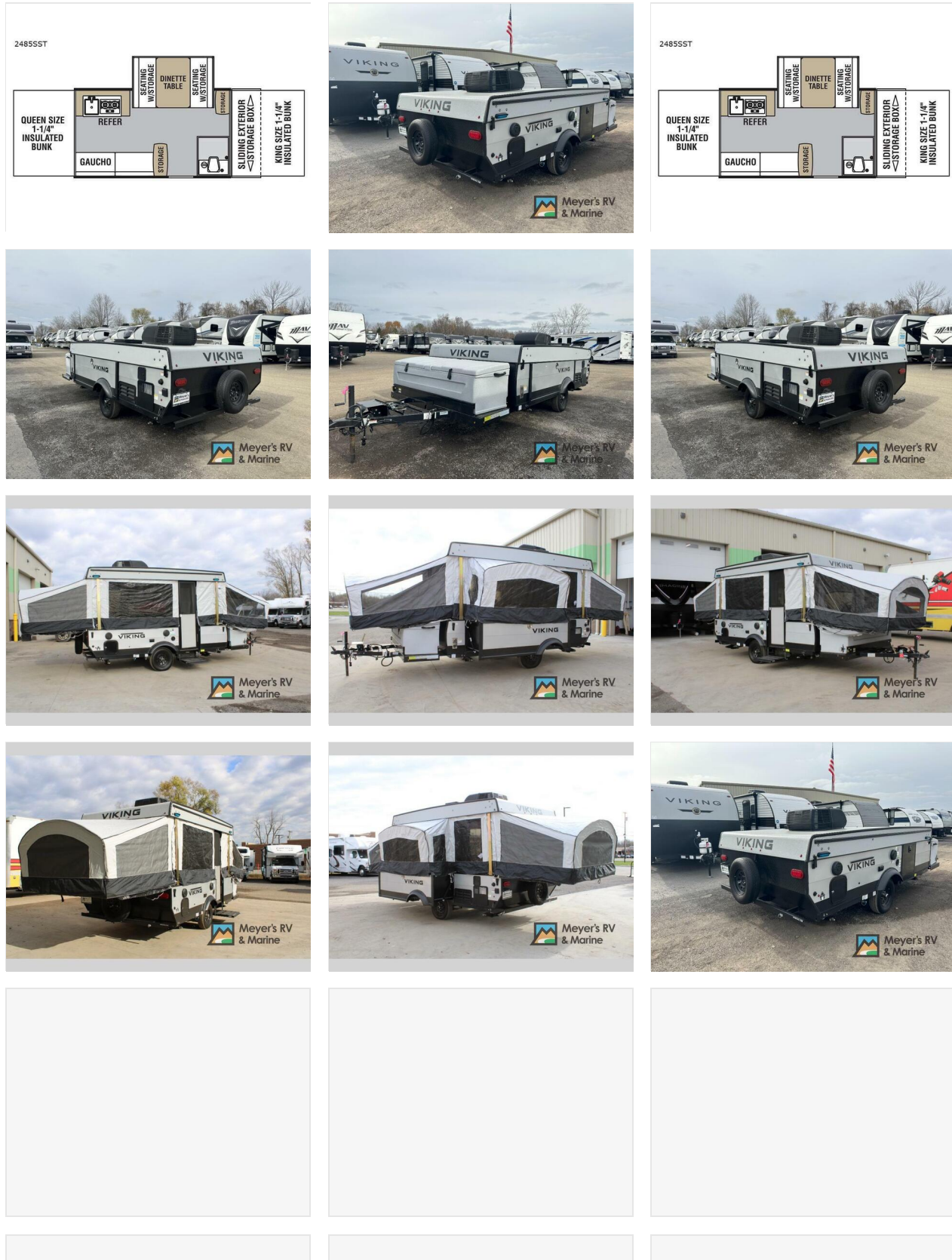
### Item address

[Farmington, Arkansas, United States](#)

# 2022 Viking Legend 2485SST

\$15,895

## Item images



## 2022 Viking Legend 2485SST

**\$15,895**