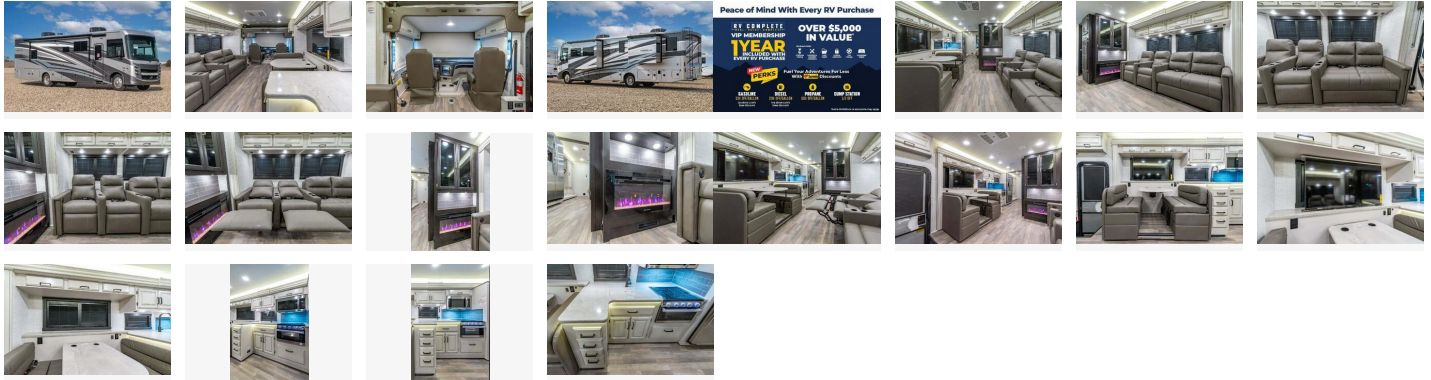


# 2024 Entegra Coach Vision XL 36C

\$169



Item

Item URL: <https://www.rvpostings.com/510563> Item reference number #510563

Dealer

Motor Home Specialist Inc.  
Phone: 8887536127  
Email: [import237459@rvpostings.com](mailto:import237459@rvpostings.com)

Quick info

0 mi

Details

Item type: For sale  
Posted on : 04/16/2024

## 2024 Entegra Coach Vision XL 36C

**\$169**

### Description

2024 Entegra Coach Vision XL 36C, For Our Best Price Call 800-335-6054 or Visit MHSRV.com - Motor Home Specialist - The #1 Volume Selling Motor Home Dealership in the World 10 Years in a Row! Approximately \$165 Million Dollars to Choose From. New RVs from \$19,999 to \$1,500,000 and Every Price-Point in-between! No Games. No Gimmicks. Huge Discounts on All New RVs Every Day! No Prep or Make Ready Charges Free 14 Nights of Camping - Plus the RV Complete VIP Suite of Services Complementary for 1 Year! MSRP \$249,164. The All-New 2024 Entegra Coach Vision XL 36C Bath & ½ Class A Luxury RV for sale at Motor Home Specialist; the #1 Volume Selling Motor Home Dealership in the World. The Entegra Coach Vision with 3 slides is built for your next adventure and includes all new features such as all new full body paint exteriors, automatic leveling system, 3 burner range, 50 TV lift, theater seating sofa, king bed, fireplace, TV lift in dinette booth, bedroom TV, spacious shower with glass shower and overall large layout. This amazing RV boasts Customer Value Package which features 5.5 KW generator, 50-amp electrical service, 1,000-watt inverter, automatic hydraulic leveling jacks, backup and sideview camera, driver/passenger cockpit table, electric awning with LED lights, exterior entertainment center with LED TV and single disc DVD/FM radio, Frameless windows, Infotainment system, JRide plus package, LED TV in living room, Roller shades, slide out cover awnings and Solid-surface kitchen countertops. Optional equipment includes the beautiful full body paint, Modern Farmhouse interior, stackable washer and dryer as well as the front overhead bunk. For additional details on this unit and our entire inventory including brochures, window sticker, videos, photos, reviews & testimonials as well as additional information about Motor Home Specialist and our manufacturers please visit us at MHSRV.com or call 800-335-6054. At Motor Home Specialist, we DO NOT charge any prep or orientation fees like you will find at other dealerships. All sale prices include a multi-point inspection, interior & exterior wash, detail service and a fully automated high-pressure rain booth test and coach wash that is a standout service unlike that of any other in the industry. You will also receive a thorough coach orientation with an MHSRV technician, a night stay in our delivery park featuring landscaped and covered pads with full hook-ups and much more! Read Thousands upon Thousands of 5-Star Reviews at MHSRV.com and see what they had to say about their experience at Motor Home Specialist. MHSRV.com or 800-335-6054 - Why Pay More? Why Settle for Less? Bath Half,

### Basic information

**Year:** 2024  
**Stock Number:** MHS42048  
**VIN Number:** 34979-MHS42048  
**Condition:** New  
**Length:** 36  
**GVW:** 24000  
**Sleeps:** 8  
**Slideouts:** 3

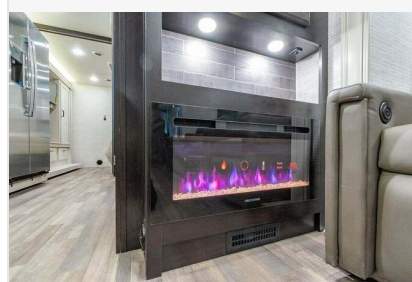
### Item address

[, Alvarado, Texas, United States](#)

# 2024 Entegra Coach Vision XL 36C

\$169

## Item images



## 2024 Entegra Coach Vision XL 36C

**\$169**