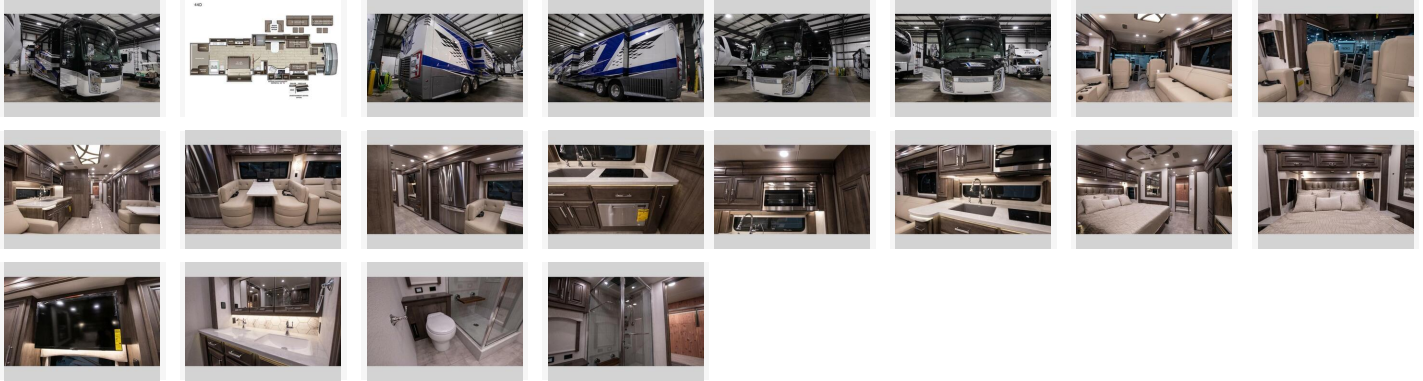


## 2024 Entegra Coach Anthem 44D

**Not priced**

### Item

**Item URL:** <https://www.rvpostings.com/225141> **Item reference number**  
#225141

### Dealer

TerryTown RV Superstore  
Phone: 6164201000  
Email: [import237399@rvpostings.com](mailto:import237399@rvpostings.com)

### Quick info

0 mi | Diesel

### Details

**Item type:** For sale  
**Posted on :** 10/31/2022

## 2024 Entegra Coach Anthem 44D

**Not priced**

### Description

2024 Entegra Coach Anthem 44D, Entegra Coach Anthem Class A diesel motorhome 44D highlights: Master Suite Full and Half Bath Power Theater Seating Four Samsung Smart TVs Huge Walk-In Wardrobe Washer and Dryer Two 190W Solar Panels Comfortable traveling and living can be found in this coach with a master suite that includes a slide out king bed, dual wardrobes, drawers for storage and a 32" Smart TV, plus a full bathroom with a dual sink vanity like at home, and a huge walk-in wardrobe with more storage areas plus a washer and dryer to keep everything clean while away. There is a mid-coach half bath for convenience, and the combined living and kitchen area offers full kitchen amenities such as a convection microwave, a Fisher & Paykel dishwasher, slide-out storage tray(s) in the overhead cabinet, a buffet/table and two chairs to dine or work from, power theater seating to enjoy while watching one of two Smart TVs in this area, plus a hide-a-bed sofa. There are options to change out the furniture if you wish such as a booth dinette, a 74" sofa with ottomans, and/or another hide-a-bed sofa with the desk/fireplace entertainment center option. With any Anthem Class A diesel motorhome by Entegra Coach, setting up camp has never been easier with the 15-inch digital dash displaying an integrated 360-degree surround view system with fourteen smart radar sensors and six HD cameras plus the Valid air leveling system. Each roof is constructed with arched aluminum trusses filled with batt insulation and reflective Flexfoil topped with plywood decking then one-piece fiberglass, exterior walls with Aluma-Tru welded tubular aluminum studs, insulated front and rear caps, and X-Bridge bracing welded into the chassis frame. The interior provides the Firefly multiplex system with 10-inch VegaTouch touchscreen for complete integration of the coach controls with remote monitoring and control from the available mobile app, a decorative ceiling feature with integrated accent lighting, powered solar day and blackout night shades, a central vacuum system, and Aire-Secure travel locks for all pocket doors to mention a few luxury, stylish and convenient features. So why not experience the best trip each and every time, choose an Anthem today!

### Basic information

**Year:** 2024  
**Stock Number:** 43847  
**VIN Number:** 4VZAU1D11RC094501  
**Condition:** New  
**Length:** 44  
**GVW:** 52000  
**Sleeps:** 5  
**Slideouts:** 4

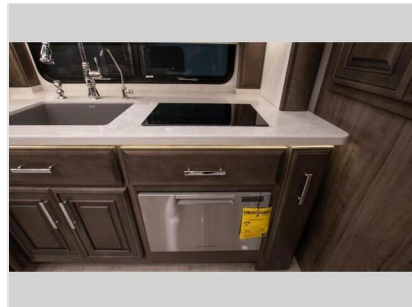
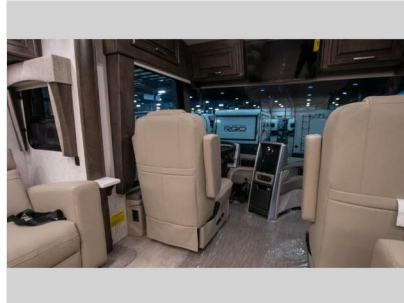
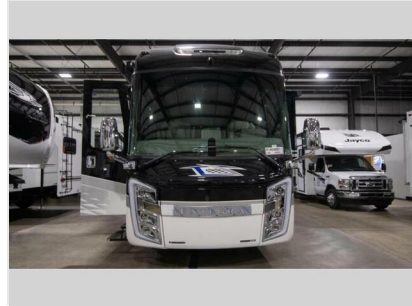
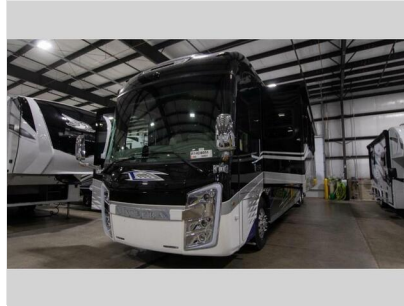
### Item address

[, Grand Rapids, Michigan, United States](#)

# 2024 Entegra Coach Anthem 44D

Not priced

## Item images



## 2024 Entegra Coach Anthem 44D

**Not priced**